



# **UbiBot<sup>®</sup> On-Premises Platform Installation Instruction**

**Dalian Cloud Force Technologies Co., Ltd.**

**[www.ubibot.com](http://www.ubibot.com)**

---





## Content

I. Installation .....	1
i. Install UbiBotOPP .....	1
ii. Privatization Environment Parameter Setting .....	3
II. Activate the device .....	6
i. Install the CH340 driver .....	6
ii. Install PC Tool .....	7
iii. Activate device .....	7
III. Login the console platform .....	10
IV. Login APP (standard version and above) .....	11

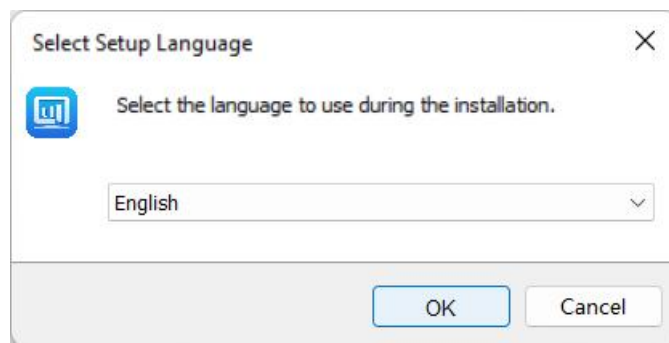
## I. Installation

### i. Install UbiBotOPP

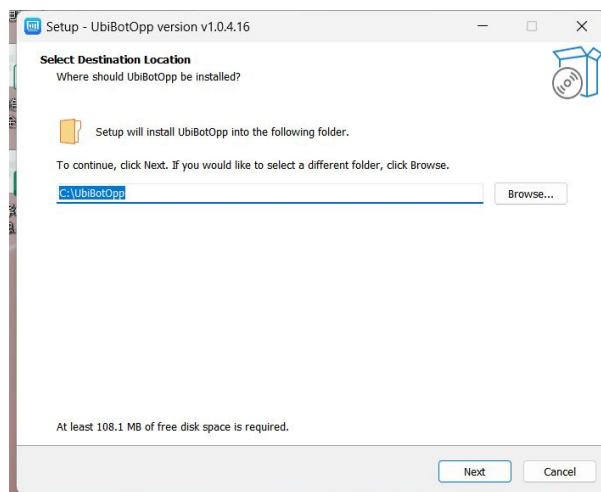
- a Double click "UbiBotOPP Setup" .

 CH341SER.exe	2022/10/12 11:28	277 KB
 PcToolsSetup.exe	2022/10/26 17:39	76,092 KB
 UbiBot.apk	2023/8/7 14:07	20,359 KB
 UbiBotOppSetup.exe	2023/6/29 16:43	103,605 KB

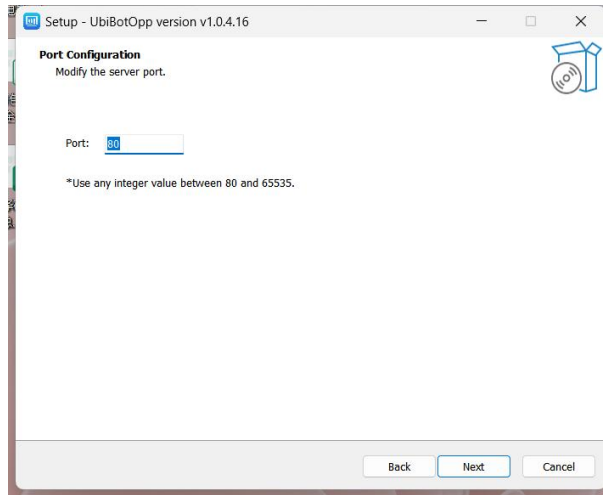
- b Select setup language, click **[OK]**.



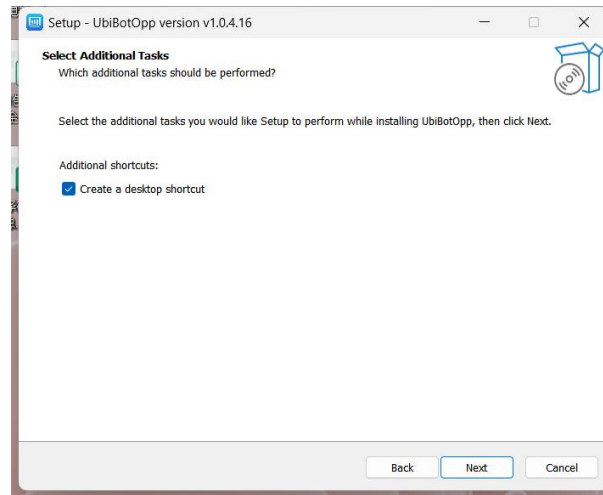
- c Confirm the installation path, the default installation path for the programme is "C:\UbibotOpp", then click **[Next]**.



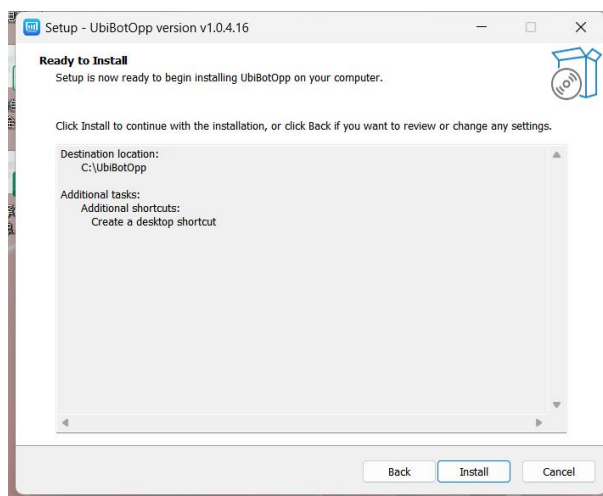
- d Set the server port, then click **[Next]**.



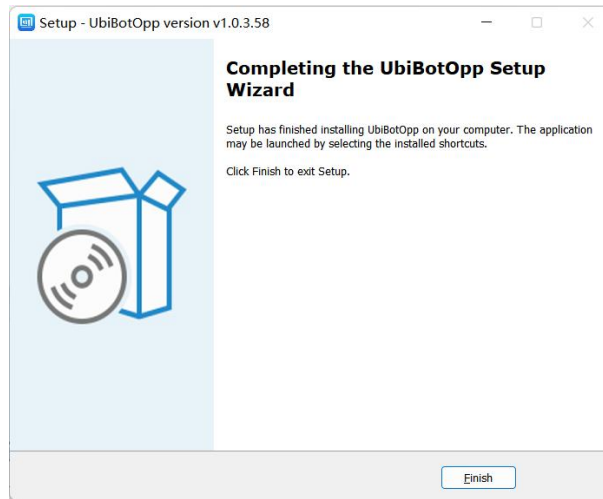
e Select additional tasks and click **[Next]**.



f Click **[Install]**.

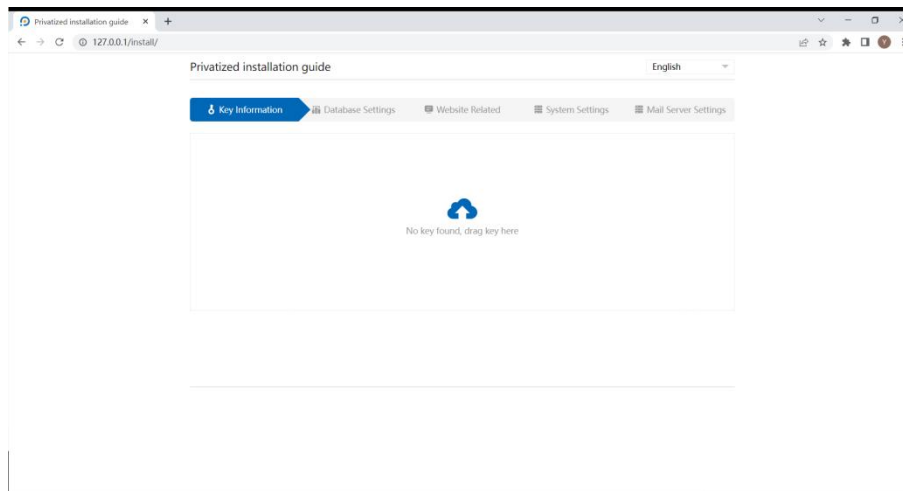


g Click **[Finish]**.

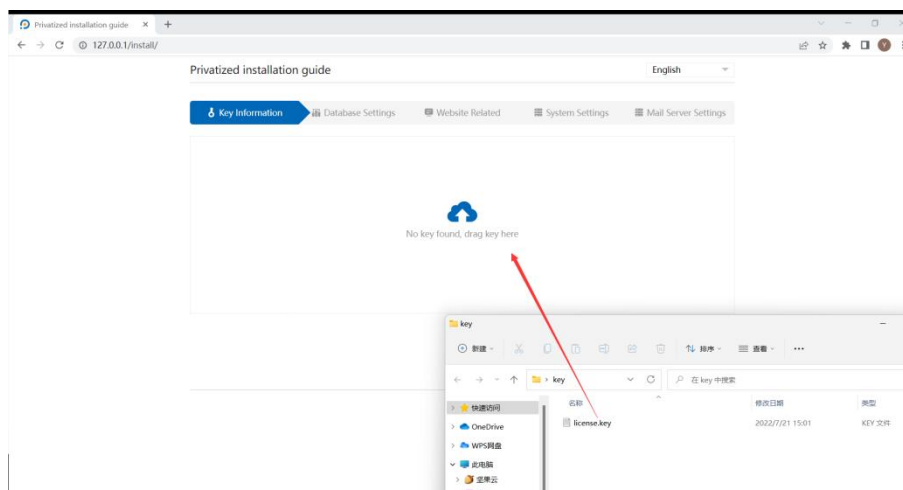


ii. Privatization Environment Parameter Setting

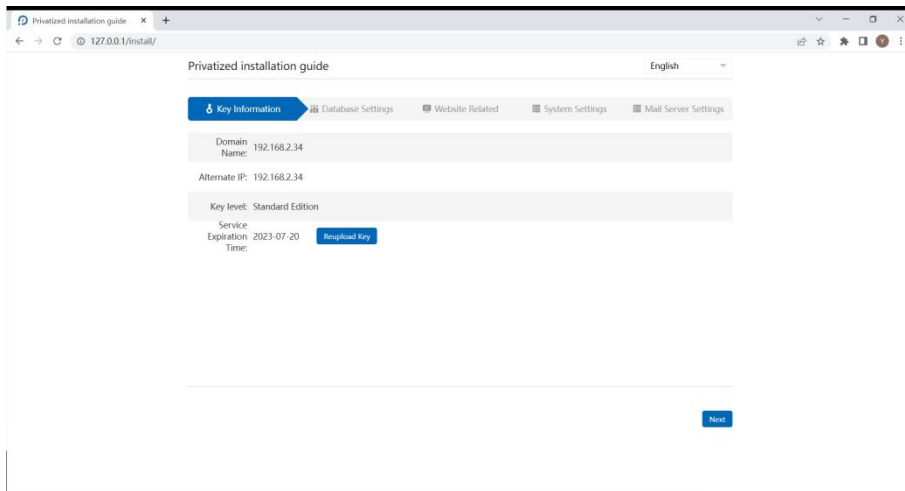
a Open the browser and go to <http://127.0.0.1/>.



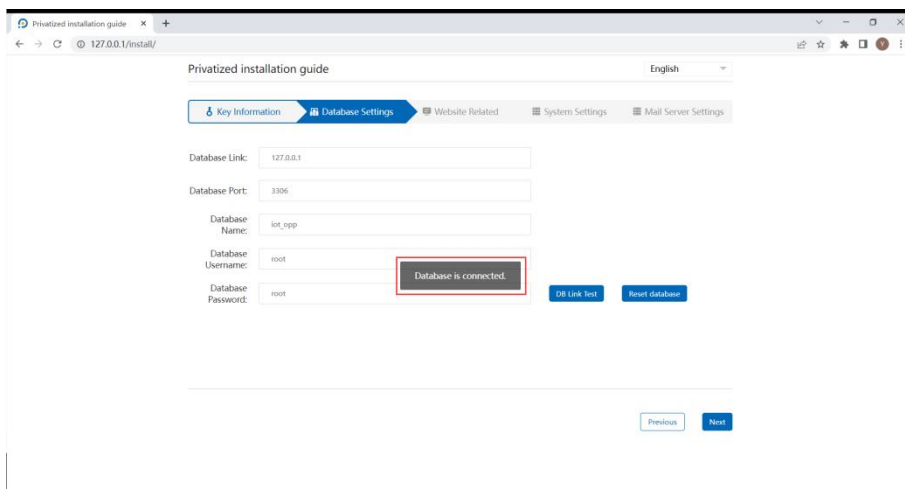
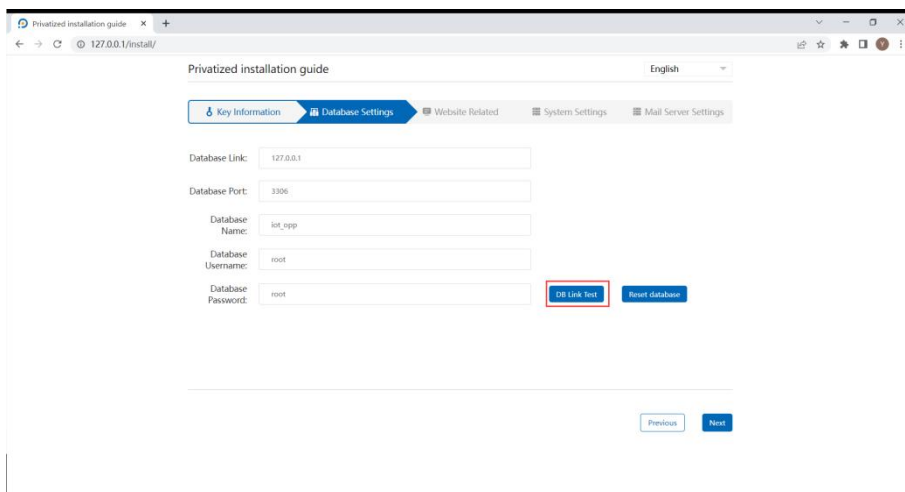
b Upload the license which download in the App Center, click **[Next]**.



After the upload, the key information will be shown on the page.



c If no special setting is needed, please click **[DB Link Test]** to check whether the database is connected. Click **[Next]**.

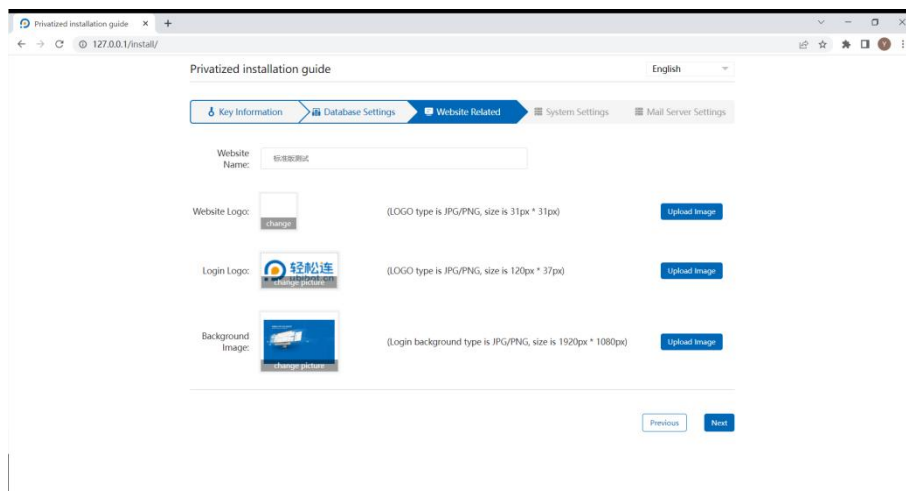


**Note: [Reset database] will clear the original database, please**

operate with caution.

After click [**Reset database**], please click [**DB link test**] again to confirm the database link is successful.

d Set website related information, you can set the name, logo and background image. Click [**Next**].




Privatized installation guide


English

Key Information Database Settings Website Related System Settings Mail Server Settings

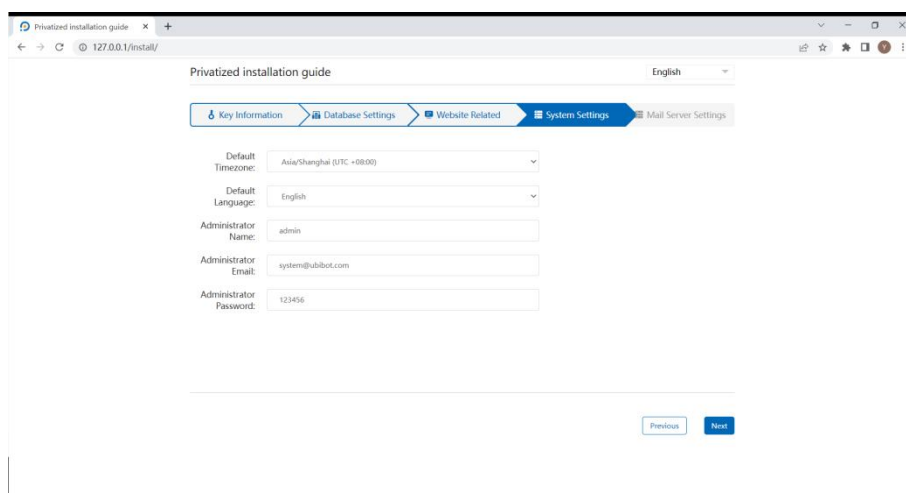
Website Name:

Website Logo:  (LOGO type is JPG/PNG, size is 31px \* 31px)

Login Logo:  (LOGO type is JPG/PNG, size is 120px \* 37px)

Background Image:  (Login background type is JPG/PNG, size is 1920px \* 1080px)

e Set the system setting like default timezone, language, account, etc.



Privatized installation guide

English

Key Information Database Settings Website Related System Settings Mail Server Settings

Default Timezone: Asia/Shanghai (UTC +08:00)

Default Language: English

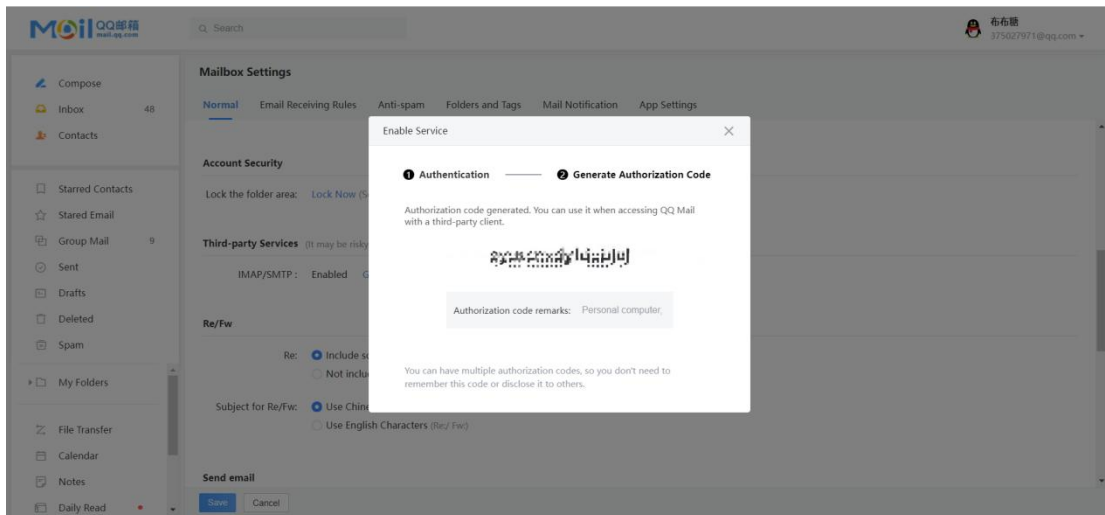
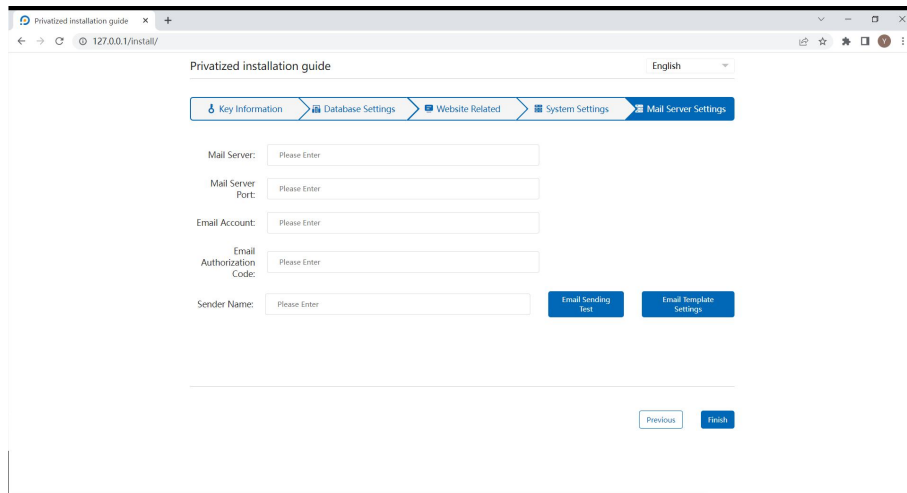
Administrator Name:

Administrator Email:

Administrator Password:

f If you need to use the email alert function (not supported in the free version), please set up the Mail Server Settings (server for sending alert emails). Click [**Finish**], then it will jump to the console platform.

Please check with the mail service provider you are using for the relevant settings. Here is an example, the relevant settings are as follows.



## II. Activate the device

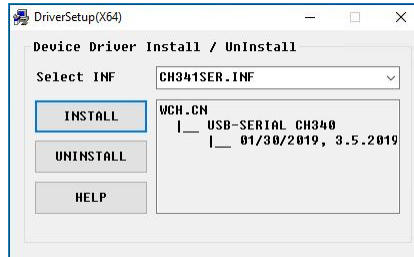
### i. Install the CH340 driver

- a Double click "CH341SER" .

CH341SER.exe	2022/1/29 11:15	277 KB
PcToolsIO Setup.exe	2022/7/25 15:58	76,114 KB
UbiBotOpp Setup.exe	2022/7/25 16:32	111,684 KB

- b Click **[Install]**.



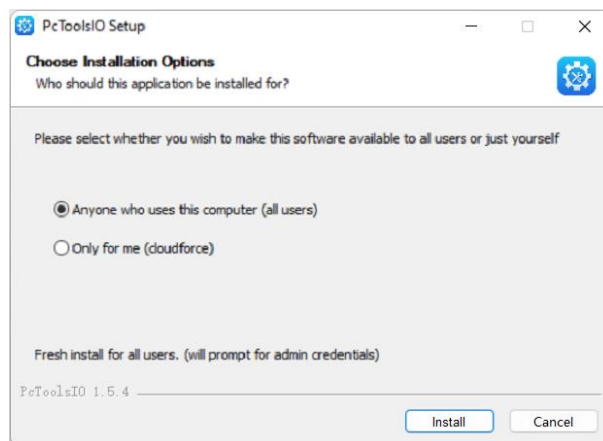


ii. Install PC Tool

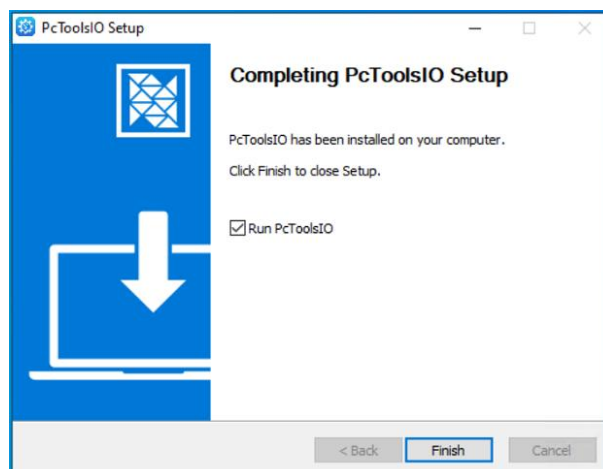
a Double click "PcToolsIO Setup" .

CH341SER.exe	2022/1/29 11:15	277 KB
PcToolsIO Setup.exe	2022/7/25 15:58	76,114 KB
UbiBotOpp Setup.exe	2022/7/25 16:32	111,684 KB

b Click **[Install]**.



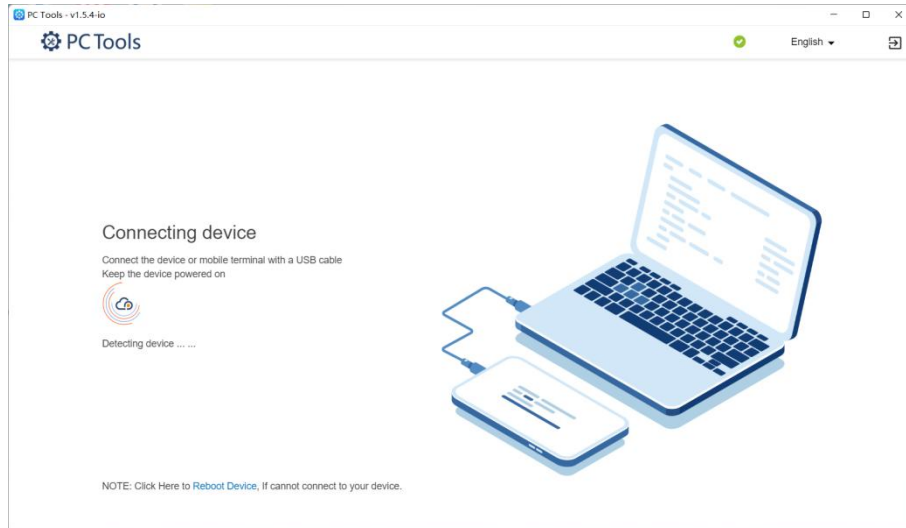
c Click **[Finish]**.



iii. Activate device

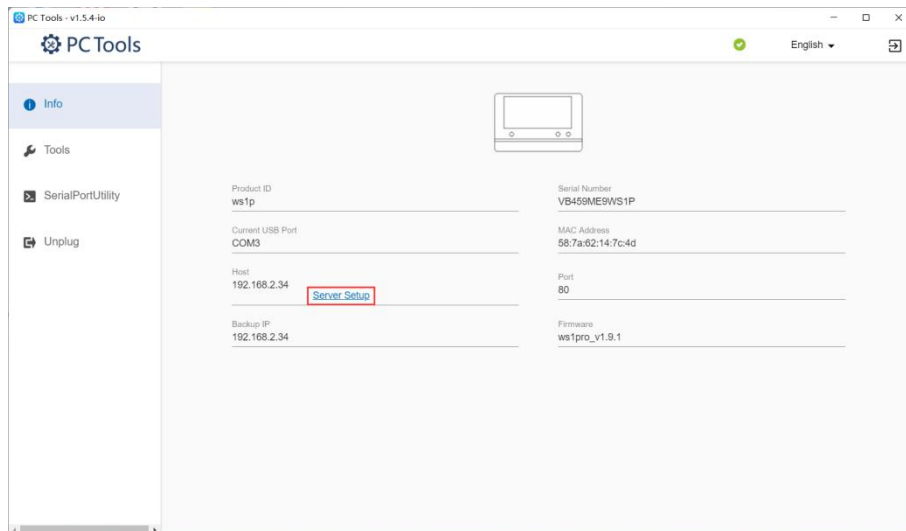
Please ensure that the device to be activated is not bound. If not, restore the factory setting of the device first.

a Double click PC Tool.

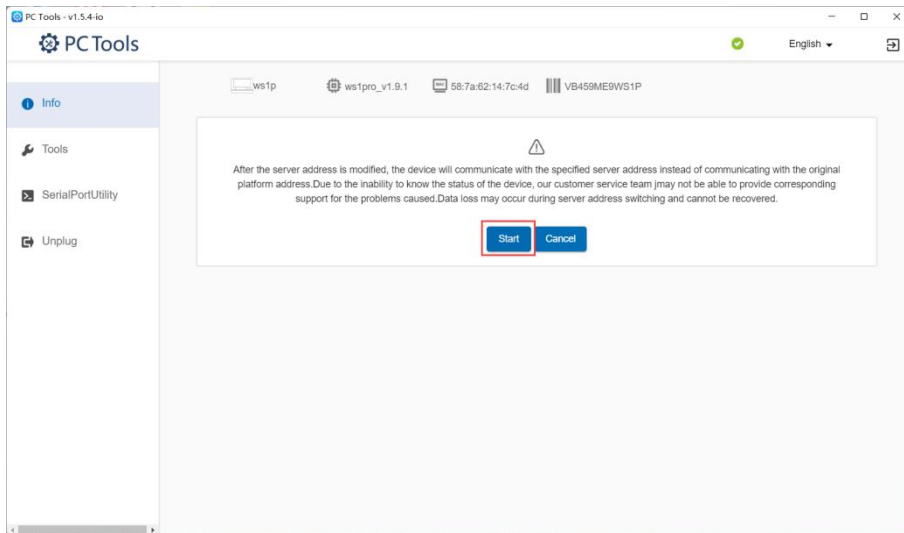


b Connect the device to the computer with a USB cable.

c Click [**Server Setup**].

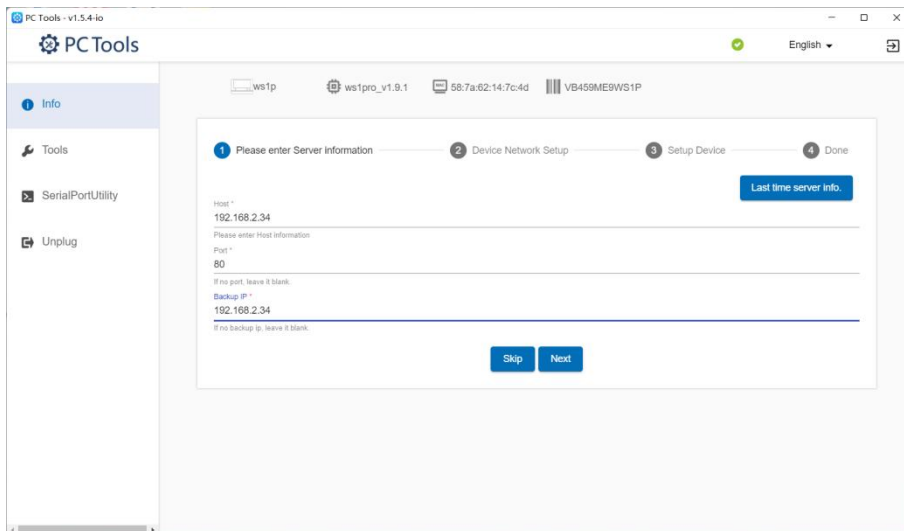


d Click [**Start**].

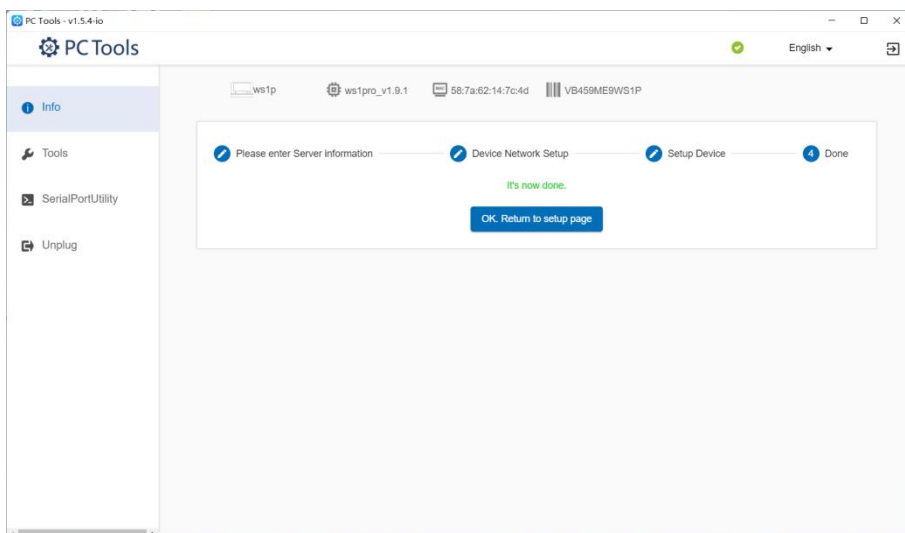
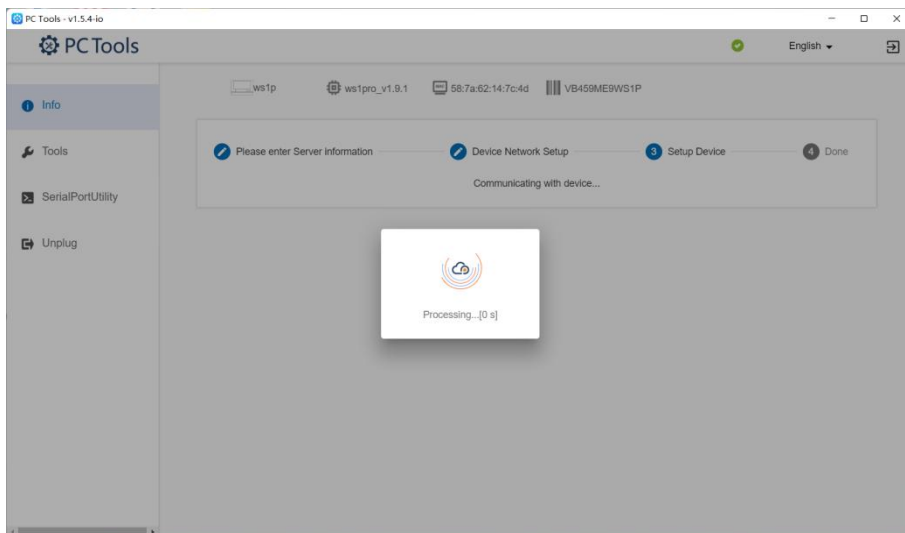
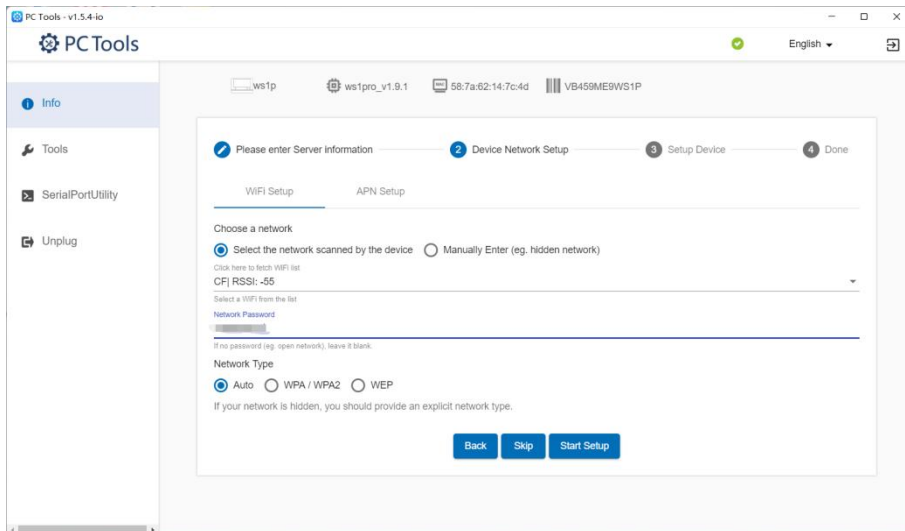


e Enter the host, port and backup IP, then click **[Next]**.

- Host: the host name set in the key.
- Port: 80(default). If the port has been modified, please fill in the new port number.
- Backup IP: the IP address set in the key.



f WiFi setup. Choose the network, set the Network SSID and password, then click **[Start Setup]**. After the setup, the device will be shown in the console platform.

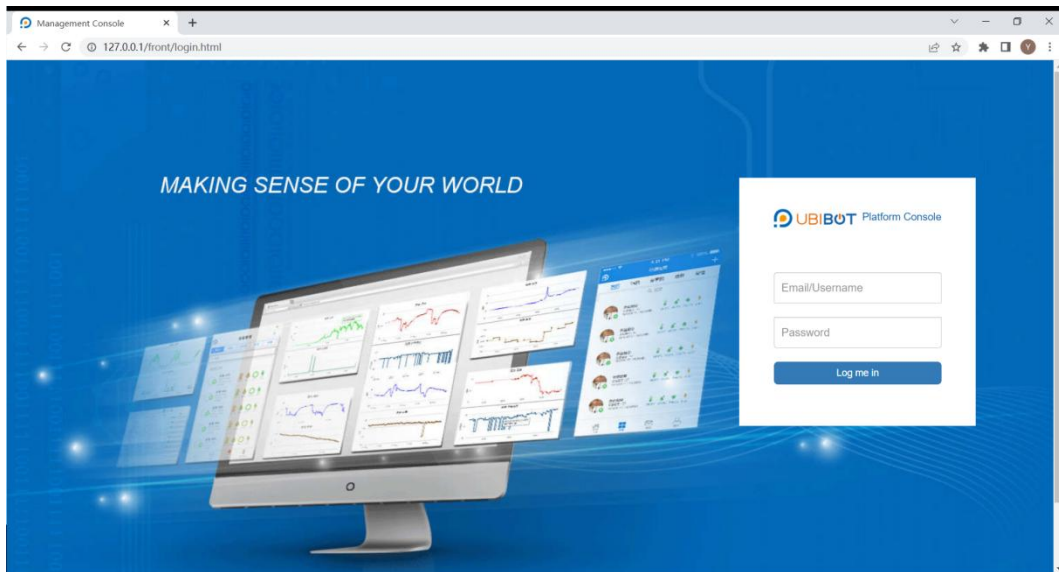


### III. Login the console platform

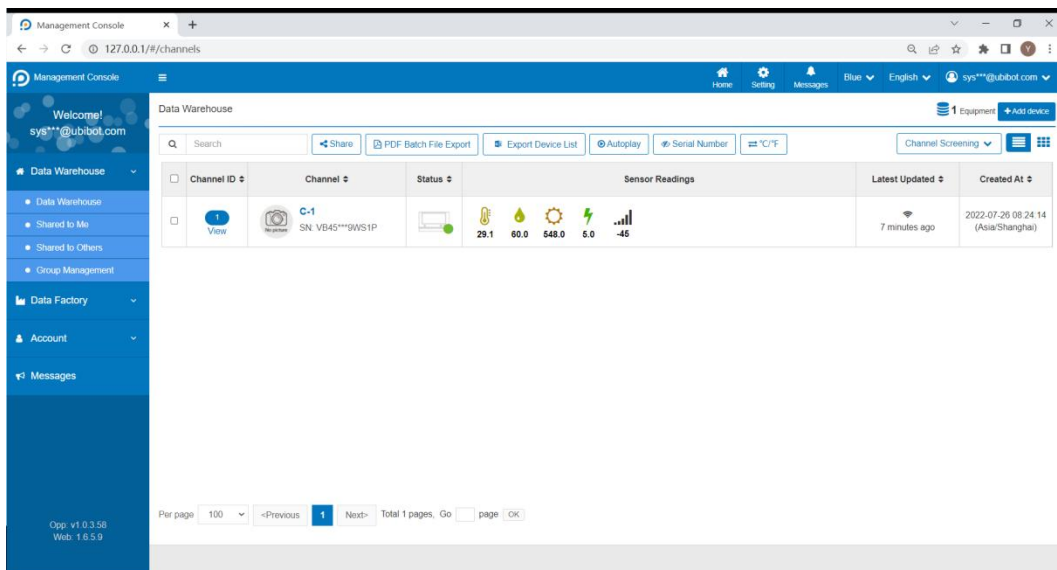
Access <http://127.0.0.1/> (local server only) or the specified host

address, such as <http://192.168.2.34>.

The username and password are set in the system settings.



Click **[Data Warehouse]**, the activated devices are shown in the page.



**Note:** If you need to bind the device again after deleting it, restore the factory setting of the device first.

#### IV. Login APP (standard version and above)

- a Download and install the "123 IoT OPP" .

b Open the APP and input the server, account and password. The server address must be the server address+port, such as 192.168.2.34:80.

